

Since 1985

1. Installation (Horizontal Area):

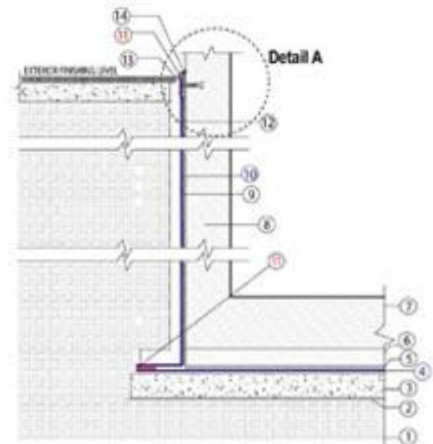
A. Blinding concrete surface should be smooth, clean & free from sharp projections, otherwise, a protection layer (non-woven polyester, min140 gr./m²) must be used to receive PVC membrane.

B. Apply (PVC 1500 TNL) membranes loose laid for horizontal areas with 50mm overlap by using hot air welding technique. Horizontal PVC membranes shall be installed with extension of 300mm to enable the welder to join the horizontal membranes at the corners properly with the followed vertical PVC membrane.

C. Apply horizontally protection layer Non-woven polyester, min140gr./m²) with 100mm overlap over the entire horizontal PVC membrane or as required.

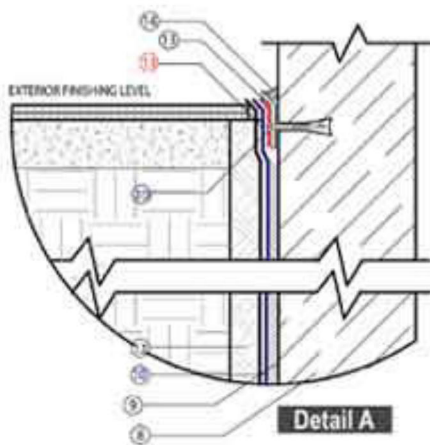
D. Cover sheets with permanent overlaying construction as soon as possible. This can be by applying a minimum 50mm thick concrete protection layer.

E. Lay steel reinforcement and concrete as specified



2. Installation (Vertical Area)

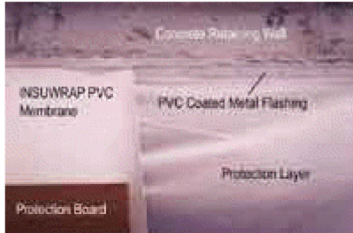
A. Vertical surfaces should be smooth, clean & free from sharp projections, otherwise a protection layer (non woven polyester, min140 gr./m²) must be used to receive PVC membrane.



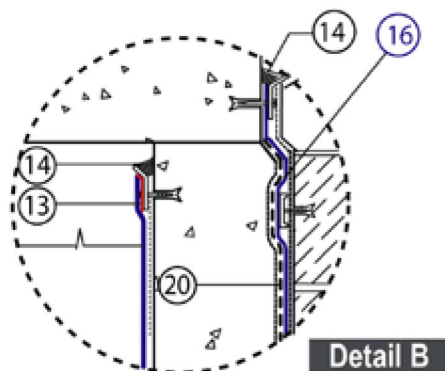
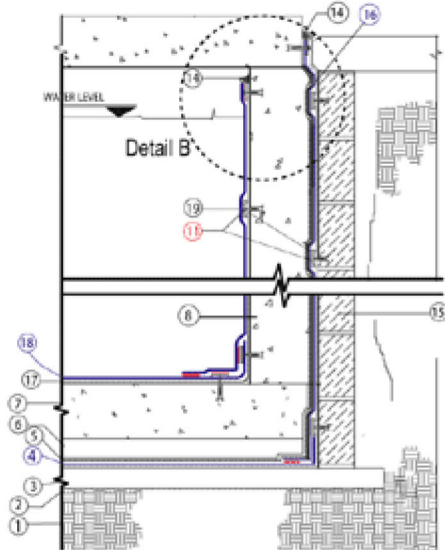
B. Apply (PVC 1500 TNL) membrane vertically by mechanical fixing using PVC coated metal strips (50mm width) fixed horizontally to the walls by fasteners and receiving PVC membrane by using hot air welding technique over the strips. PVC rolls should be joined vertically with 50mm overlaps using hot air welding technique.

C. Pipes, ducts, cables, etc. where passing through sheets., must be completely watertight using pre-formed collars fully bonded/sealed to both pipes and sheets. Dressing can be made at site using the same PVC liner.

Since 1985



Tanking & Lining System



3. Protection

Cover external walls of tanking system with at least (10, mm thick) Protection Boards, provide a temporary support or Insurbond-106 contact adhesive to ensure full contact of boards to tanking system during back filling operation.

4. Test Method

To check welding quality at the overlaps, Visual test, Needle test or Vacuum test can be used when necessary.

Drawing Key

- 1- Hard Natural Grade
- 2-Vapor Barrier
- 3-Concrete Blinding (Smooth Finish)
- 4-INSUWRAP PVC Waterproofing membrane (1500TNL = 1.50mm thick)
- 5-Geotextile Protective Layer (min140gm/m²)
- 6-Concrete Screed Protection Layer
- 7-Reinforced Concrete Under Ground Raft Slab
- 8-Reinforced Concrete Retaining Wall
- 9-Special Contact Adhesive
- 10-INSUWRAP PVC. Waterproofing Membrane (1500 TNL = 1.50mm thick) Mechanically Fixed or Fully Bonded on Retaining Wall
- 11-Hot Air Welding
- 12-Protection Board
- 13-PVC Coated Metal Flashing
- 14-Sealant
- 15-Masonry Block Wall
- 16-INSUWRAP PVC. Waterproofing Membrane (1500 TNL = 1.50mm thick) Mechanically Fixed on Block Wall
- 17-Protection Layer (Optional)
- 18-INSUWRAP PVC 1500 LNTR Mechanically Fixed
- 19-PVC Coated Metal Strip or Aluminum Strip
- 20-Protection Board